

# 鳥取県大山産ダイセンヤマナメクジの記載

東 正 雄

Description of a New Subspecies of Genus *Incilaria* Benson, 1842, Family Philomycidae,  
from Mt. Daisen, Tottori-Pref. Japan.

Masao Azuma

[13-7, Hōbai 1-chōme, Takarazuka-City, Hyogo-Pref, Japan (665)]

1957年8月上旬、鳥取県大山高度850m~900m、淡茶~黄褐色の巨大(15cm内外)なヤマナメクジ *Incilaria fruhstorferi* (Collinge, 1901) の変種 (variety), 若干個体採集、剖見の結果新型(亜種)と認めたのでここに記載する。

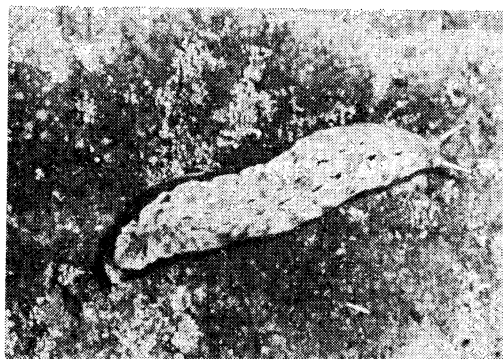
Family Philomycidae ナメクジ科

Genus *Incilaria* Benson, 1842 ナメクジ属  
*Incilaria fruhstorferi daiseniana* Azuma  
subsp. nov.

## ダイセンヤマナメクジ (新亜種・新称)

軟体は淡橙褐色、背面や側面に少し淡黒い斑紋が不規則に現れる。体は巨大で15cm内外に及ぶ、頭の前上方の大触角はヤマナメクジより少し短い。生息地：大山は海拔850m~900m、石川県白山では1000~1400m、京都府冠島では100m内外の低い所、岩手県笹森山の国見温泉では700m内外、以上の産地では原生林に生息している。

生殖器：輸卵管(ov)15~18mm、一様太さであるが、時には中ほどが肥厚して節状となる。輸精管(vd)40~45mm細長く、陰茎本体(ep)始部は急に膨大、反転し少し細くなり陰茎鞘(ps)始部著しく膨らみ、中ほどから



Text-fig. 1 : *Incilaria fruhstorferi daiseniana*  
Azuma subsp. nov.

## ダイセンヤマナメクジ (新亜種・新称)

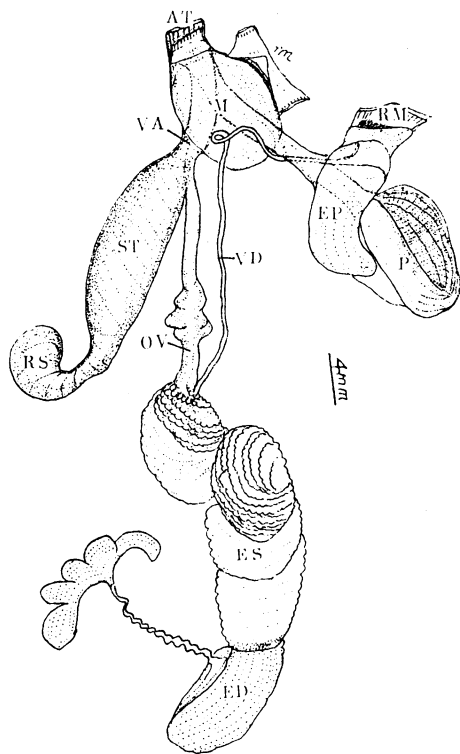
遠端へ少し細くなる、そして生殖孔近くの口球(M)を経て生殖孔(at)にいたる。腔(va)5~6mm、短く細く、分岐して受精囊の柄部(st)15~17mm、著しく肥厚し、遠端近くで急に細くなる。受精囊(rs)7~8mmはやや小さな扁球円形。蛋白腺(ed)10mm、両性輸管(es)25~30mm。

測定：模式標本：体長(14~15cm)(液漬標本)

模式産地：鳥取県大山(850m~900m)

1957年8月3~5日採集

分布：本州(大山, 白山, 冠島, 岩手県国見温泉), 九州(対馬)



Text-fig. 2 : Genitalia of *Incilaria fruhstorferi daiseniana* Azuma

## ダイセンヤマナメクジの生殖器

岩手県国見温泉 (700m) 採集 (2 個体) の飼育によると産卵 8 月下旬寒天質のうすい膜に包まれた卵塊状に重なり、50 個前後、長い楕円形、半透明、軟かい状態であった。孵化しなかった。

比較：此の亜種はヤマナメクジ *I. fruhstorferi* (Collinge, 1901) 模式 (対馬) 産の標本に類似するが、体色が淡橙褐色であり、大触角が少し短いこと、生殖器の形態：受精囊柄部の基部は著しく肥厚し遠部へ次第に細くなる。受精囊はやや小卵形となる。輸卵管の基部は細く、中ほどで小節状に肥厚し、その後は細く一様の太さである個体もある。

生息場所はヤマナメクジよりかなり高度の高い処の原生林にすんでいる。

Twenty four years ago (Aug. 1957), I had collected some very large slugs from Mt. Daisen (altitude 850 to 900 meters) Hooiki-Province, Japan. I examined them and that based on anatomical (genital-system) study. As a result of which was recognized a new subspecies of *Incilaria fruhstorferi* (Collinge, 1901) and the description goes as follows :

Family Philomycidae

Genus *Incilaria* Benson, 1842

*Incilaria fruhstorferi daiseniana* subsp. nov.

(Text-figs. 1-2)

Soft part extended length 14-15 cm., uniformly thickened, feeble orange brown in color, dorsal and lateral aspects with some little black speckled, irregularly, tentacles merely short than *Incilaria fruhstorferi* (Collinge, 1901).

Habitat: living in the next virgin forests:

Mt. Daisen (altitude 850 to 900 meters); Mt. Hakusan (1000 to 1400 meters) Ishikawa-Prefecture; Kanmuri-jima (100 meters) Kyoto-Pref. and Kunimi-Onsen (700 meters), Sasamoriyama, Iwate-Pref.

Genital system: Oviduct (ov) 15 to 18mm long, uniformly thickened, sometimes nearly central part expanded as wave nodule like; vas deferens (vd) 40 to 45mm long very slender; epiphallus (ep) anterior abruptly swollen and reflexed rather slender (tapering) and retractor muscle (rm) joints at nearly anterior part of it; penial sheath (ps) anterior distinctly swollen and centre to posterior rather slender, passing buccal bulb (M) and reaches to atrium (at); vagina (va) 5 to 6mm long, short and slender; receptacle seminis (sd) 7 to 8mm long, small globular shape and its stalk (st) 15 to 17mm

long, anterior part rather slender and abruptly thickened and nearly posterior merely slender; albumin gland (ed) 10mm long; hermaphrodite duct (es) 25 to 30mm long.

Measurements : Type specimen, Body length 14 to 15mm (70% alcohol's specimen and its kept in Azuma's coll.

Type locality: Mt. Daisen (altitude 850 to 900 meters) collected by the author on 3 to 5 Aug. 1957

Distribution: Honsyu (Mt. Daisen, Tottori Pref.; Mt. Hakusan, Ishikawa-Pref.; Kanmuri-jima, Kyoto-Pref. and Kumini-Onsen, Sasamoriyama, Iwate-Pref.) ; Kyusyu (Tsushima) Notes: This subspecies during breeding box it spawned the last August 1981 that number of eggs about 50 to 55 which was covered by transparent membrane of gelatine, but their eggs not quite hatch.

Remarks: Present this new subspecies somewhat resembles *Incilaria fruhstorferi* (Collinge, 1901), but is easily distinguished from it in having: body feeble orange brown in color; tentacles merely short and genital system: almost receptacle stalk very distinctly thickened and tapering to posterior; receptacle seminis small globular shaped; oviduct sometimes with wave nodule like at center, etc.

I think that it living field is comparatively virgin forests of the higher altitude than the former species.